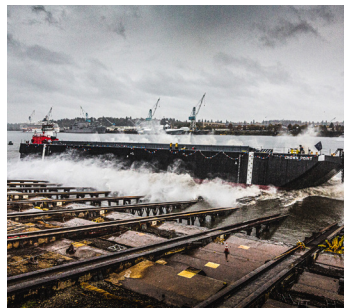
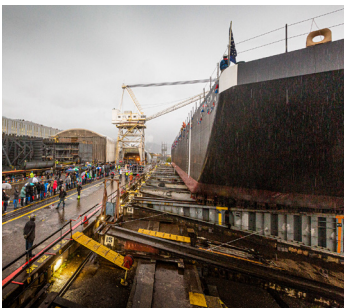


# Crown Point, Inspiration Point, Sand Point

315' Split Hull Hopper Barges

EPA Tier 4



## Dump Scow Specs

**Footprint of Scows:**

**Length:** 315'

**Breadth:** 54ft

**Depth:** 26.5'

**Draft:** loaded-20.5ft; unloaded-5'

**Capacity:** 6,000 cubic yards, each

**Type of Scow:** Split-hulled bottom dump

**Classed; Load line:** ABS A1 Barge; B-25 LL

**Mechanical system:** Caterpillar C7.1 EPA Tier 4