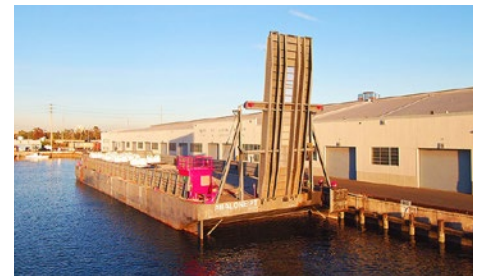
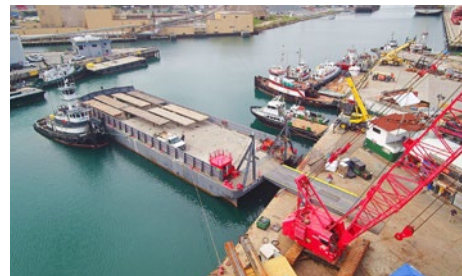


Abalone Point

Deck Barge : 185' X 50'

Official Number : 1225102

IMO Number : 142



Specifications :

Year- 1979
Builder- Kaiser Steel
Rebuilt- 2015
Length- 185'
Beam- 50'
Depth: 12'
Draft: 9.5 ft to load line
Light Draft- 1.5'
Official Number- 613867
IMO Number- N/A

MMSI- N/A
Class- N/A
Load Line- ABS Unmanned
Certification- USCG Unmanned COI,
Certified to carry CDC's
Gross Tonnage- 775 GRT
Air Draft- (ramp is 44' + freeboard)
Last Dry Dock- 2014

Tugboat : **Abalone Point**

Specifications :

General

Year- 2010
Year- 1979
Builder- Kaiser Steel
Rebuilt- 2015
Length- 185'
Beam- 50'
Depth: 12'
Draft: 9.5 ft to load line
Light Draft- 1.5'
Official Number- 613867
IMO Number- N/A
MMSI- N/A
Class- N/A
Load Line- ABS Unmanned
Certification- USCG Unmanned

COI, Certified to carry CDC's
Gross Tonnage- 775 GRT
Air Draft-
 (ramp is 44' + freeboard)
Last Dry Dock- 2014

Load

Deck Dimensions- 162' x 44'
Bin Wall Side Height: 6 ft
Deadweight Capacity- 2,000 LT
Lashing Equipment/Deck eyes-
 Chain and ratcheting turn buckle
 lashing with fixed lashing points
 on deck
Lanes- 4

Machinery & Deck Equipment-

Engine- Yanmar 3 JTKA
Hydraulic Pump- KPM K3VL45
Winches- (3) Pullmaster 25 W/
Lighting-
 Pontilux LED Flood lights

Ramp-

Dimensions- 44' x 14'
Capacity- 100,000 LBS.

Tankage

Water- N/A

Water transfer pump & Capacity-
N/A

Ballast- 16 Tanks

Cordage

Profile & Arrangement

