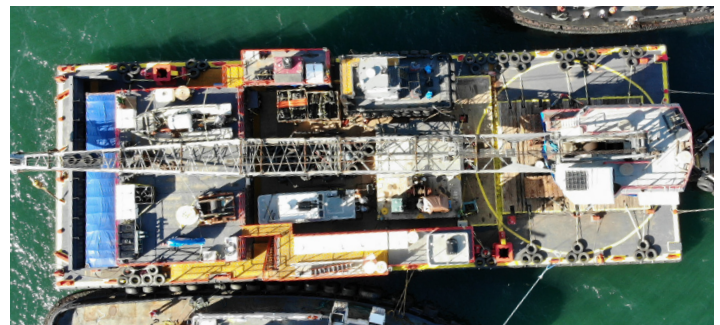


DB Ironbound

Derrick Barge : 150' X 54'

Official Number : 1288245

IMO Number : N/A



Specifications :

Year: 2018
Builder: Eagle Fabrication
Rebuilt: N/A
Length: 150'
Beam: 54'
Depth: 9'
Deep Draft: ...
Light Draft: ...
Official Number: 1288245

IMO Number: N/A
MMSI: 368068820
Call Sign: WDK5841
Class: N/A
Load Line: International
Certification: USCG
Gross Tonnage: 530 GT ITC
Air Draft: ...
Last Dry Dock: ...

Derrick Barge : DB Ironbound Specifications

Specifications :

General

Year- 2018
Builder- Eagle Fabrication
Rebuilt- 2018
Length- 150'
Beam- 54'
Depth- 9'
Deep Draft- ...
Light Draft- ...
Official Number- 1288245
IMO Number- N/A
MMSI- 368068820
Call Sign- WDK5841
Class- N/A
Load Line- International
Certification- USCG
Gross Tonnage- 530 GRT
Air Draft- ...
Last Dry Dock- N/A

Deck Machinery

Spud Winch-
Clyde Frame 7, 5-Drum
Winch Engine-
John Deere 6068hf485
Tier Rating- 3
Hydraulic Pump- ...
Generator- John Deere 4045
Capacity- 100 kW
Output- 480V
Tier Rating- 3
Water Maker- ...

Fixed Deck Gear/Equipment

(2) 75' x 26" Square Spuds
(2) Internal Spud Wells

Available Deck Gear/Equipment

(...) Smith-Berger Vertical Deck Sheaves
(...) Smith-Berger Fairleads
(...) Smith-Berger Horizontal Deck Sheaves
(...) Smith-Berger Vertical Roller

(1) ?? Pneumatic Tugger Winch??
(2) ??? Gardner-Denver 3,750 lbs Pneumatic Tugger Winch???
(1) ??? Gardner-Denver Pneumatic Tugger Winch???