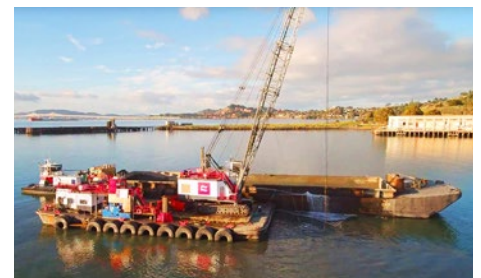
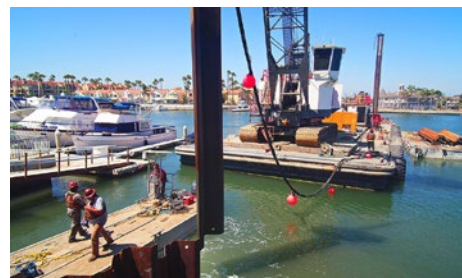
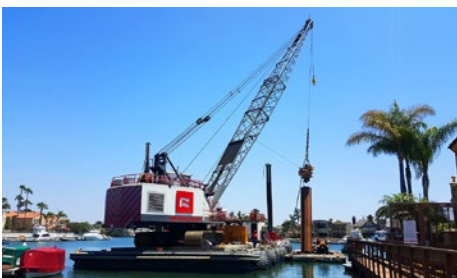


# DB Ben Weston

Derrick Barge : 110' X 48'

Official Number : 1042158

IMO Number : N/A



## Specifications :

Year- 1980  
Year- 1945  
Builder- Dravo Corporation  
Rebuilt- 2015  
Length- 110'  
Beam- 48'  
Depth- 10.5'  
Deep Draft- 8'  
Light Draft- 6'  
Official Number- 1042158

IMO Number- N/A  
MMSI- 367716480  
Call Sign- WDI 6226  
Class- N/A  
Load Line- N/A  
Certification- USCG  
Gross Tonnage- 465 GRT  
Air Draft- 35' (Crane)  
Last Dry Dock- 2015

## Derrick Barge : DB Ben Weston Specifications

## Specifications :

**General**

**Year-** 1945  
**Builder-** Dravo Corporation  
**Rebuilt-** 2015  
**Length-** 110'  
**Beam-** 48'  
**Depth-** 10.5'  
**Deep Draft-** 8'  
**Light Draft-** 6'  
**Official Number-** 1042158  
**IMO Number-** N/A  
**MMSI-** 367716480  
**Call Sign-** WDI 6226  
**Class-** N/A  
**Load Line-** N/A  
**Certification-** USCG  
**Gross Tonnage-** 465 GRT  
**Air Draft-** 35' (Crane)  
**Last Dry Dock-** 2015

**Deck Machinery**

**Spud Winch-**  
Clyde Frame 8, 2-Drum  
(2)  
**Winch Engine-**  
VM Motori 24-cp/23  
**Tier Rating-** 3  
**Hydraulic Pump-** Hagglunds  
**Generator-** John Deere 4045  
**Capacity-** 65 Kw  
**Output-** 480V  
**Tier Rating-** 3  
**Water Maker-** N/A

**Fixed Deck Gear/Equipment**

(2) 75' x 30" Square Spuds  
(2) Internal Spud Wells  
(3) ERL Hand Crank Winches  
(1) 2" Fire Monitor

**Available Deck Gear/Equipment**

(4) Smith-Berger Vertical Deck Sheaves  
(2) Smith-Berger Fairleads  
(2) Smith-Berger Horizontal Deck Sheaves  
(1) Smith-Berger Vertical Roller  
(1) 18,000 lbs Pneumatic Tugger Winch  
(2) Gardner-Denver 3,750 lbs Pneumatic Tugger Winch  
(1) Gardner-Denver 1,800 lbs Pneumatic Tugger Winch  
(1) Buoy Roller  
(8) Buoy Cradles  
(1) 1" – 3 ¼" Chain Lock  
(4) Ocean Guard Mooring Buoys  
(4) 6,600 lbs Flipper Delta Anchors  
(1) Hose Lock

**Tools**

**Welders-** Miller XMT-350  
Lincoln "Tombstone"  
**Oxygen/Acetylene-**  
(2) Victor Journeyman Torch Setups  
**Plasma Cutter-** (  
1) Hypertherm 85A  
**Air Compressor-** (1) Ingersoll-Rand UP6S-25 125 CFM  
**Pressure Washer-** Cam-Spray 5HP 4GPM  
(1) Chest tool boxes loaded with hand tools, chorded and chordless tools, with standard and metric sizes.

**Electronics**

**AIS-** Furuno FA-150  
**VHF-** (2) Icom M-604  
**GPS-** Trimble SPS46  
**Chartplotter-** Nobeltec Trident  
**Computer-**  
(1) Lenovo Thinkcenter  
(1) Dell Desktop W/ 20" Monitor  
**Cameras-** (6) CCTV  
**Cell Phone-** (562) 706-0453  
**Satellite Phone-** N/A  
**Crane**  
**Lima 2400B**  
**Galley**  
(2) Refrigerators  
(2) Freezers  
(2) Oven/Ranges  
(2) Microwaves  
(1) Stainless Prep table  
(1) Stainless 1 Bay Sink

**Berthing/Ammenities-**  
N/A

**Heads-** 2  
**Showers-** N/A  
**Washer/Dryer-**  
(1) Kenmore Front Load  
**Water Heaters-**  
(2) Tank Water Heaters  
**Sinks-** (1) W/ Mirrors  
**Tankage**  
**Water-** 1,000 Gallons  
**Fuel-** Deck Loaded  
**Ballast-** (16) Tanks  
**Black Water-** 7,000 Gallons

**Safety**

**Liferaft-** N/A  
**Liferings-**  
**EPIRB-**  
**Fire Extinguishers-** 4  
**Fixed Extinguisher-** N/A  
**Survival Suits-** N/A  
**Life Preservers-**  
**AED-** 1  
**First Aid Kit-** 1  
**Oxygen-**  
**Trauma Kit-**