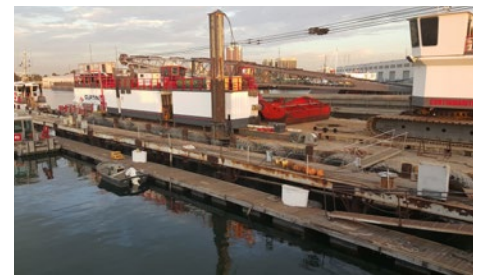
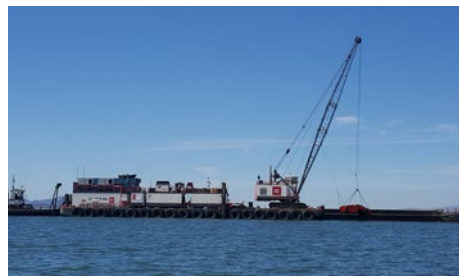


DB Salta Verde

Barge : 185' X 50'

Official Number : 622241

IMO Number : N/A



Specifications :

Year- 1980
Builder- Kaiser Steel
Rebuilt- 2010
Length- 185'
Beam- 50'
Depth- 12'
Deep Draft- 7'
Light Draft- 2'
Official Number- 622241
IMO Number- N/A

MMSI- 367507960
Call Sign- WDF 9705
Class- N/A
Load Line- ABS
Certification- USCG Manned COI
Gross Tonnage- 869
Air Draft- 44' (Crane)
Last Dry Dock- 2015

Tugboat : EEL PT.

Specifications :

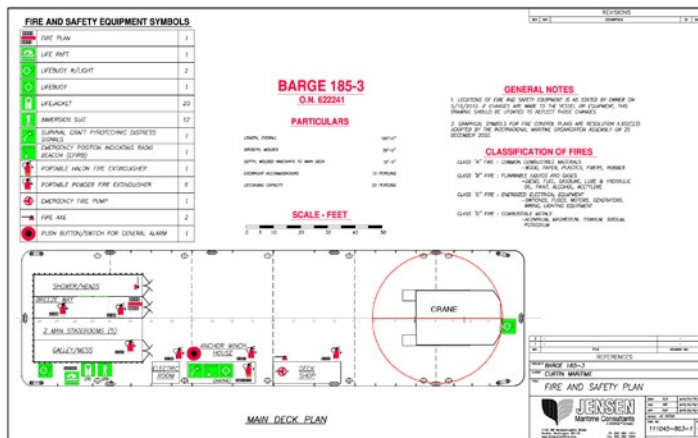
GENERAL

Year- 1980
Builder- Kaiser Steel
Rebuilt- 2010
Length- 185'
Beam- 50'
Depth- 12'
Deep Draft- 7'
Light Draft- 2'
Official Number- 622241
IMO Number- N/A
MMSI- 367507960
Call Sign- WDF 9705
Class- N/A
Load Line- ABS
Certification- USCG Manned COI
Gross Tonnage- 869
Air Draft- 44' (Crane)
Last Dry Dock- 2015
 CDC's
Gross Tonnage- 2164 GRT
Air Draft- (ramp height is 60')
Last Dry Dock- 2015

DECK MACHINERY

Winch- Clyde Frame 7, 5-Drum
(4) 1,800' 1" Wires on drums
Winch Engine- John Deere
 PowerTec 6068
Tier Rating- 3
Torque Converter- Twin Disc

Profile & Arrangement



Hydraulic
Generator- (2) John Deere 6068
Capacity- 150KW
Output- 480V
Tier Rating- 3
Water Maker- (2) Aqua Whisper
 29 GPH

FIXED DECK GEAR/EQUIPMENT

(4) 4500 lbs Flipper Delta Anchors
(4) Fixed Anchor Saddles
(4) Smith-Berger Fairleads
(4) Smith-Berger Horizontal Deck Sheaves

AVAILABLE DECK GEAR/EQUIPMENT

(4) Smith-Berger Vertical Deck Sheaves
(2) Smith-Berger Fairleads
(2) Smith-Berger Horizontal Deck Sheaves
(1) Smith-Berger Vertical Roller
(1) 18,000 lbs Pneumatic Tugger Winch
(2) Gardner-Denver 3,750 lbs Pneumatic Tugger Winch
(1) Gardner-Denver 1,800 lbs Pneumatic Tugger Winch
(1) Buoy Roller
(8) Buoy Cradles

(1) 1" – 3 ¼" Chain Lock
(4) Ocean Guard Mooring Buoys
(4) 6,600 lbs Flipper Delta Anchors
(1) Hose Lock

TOOLS

Welders-
(1) Lincoln FlexTec 450
(1) Miller Suitcase X-treme
Oxygen/Acetylene-
(10) Oxygen
(8) Acetylene
(2) Victor Journeyman Torch Setups

Plasma Cutter-
(1) Hypertherm 85A
 Air Compressor-
(1) Ingersoll-Rand SSR-HP75
 300CFM
(1) Gardner-Denver Electra-saver
 25hp 150CFM

Hydraulic Pack-
(1) 10HP 9GPM 3,000 PSI @ 1800 RPM

Hydraulic Tank Capacity- 75 Gallon

Pressure Washer- Cam-Spray
 5HP 4GPM

(2) Chest tool boxes loaded with hand tools, chorded and chordless tools, with standard and metric sizes.

CRANE

Manitowoc 4600 S-3

GALLEY

(4) Kenmore Elite Refrigerators
(2) Kenmore Elite Freezers
(1) Whirlpool Chest Freezer
(1) Manitowoc Ice Maker
(2) Kenmore Electra Range/Ovens
(1) Admiral Craft Deep Fryer
(1) 3-Bay Stainless Sink Basin
(1) Kenmore Elite Mini-Fridge

BERTHING/AMMENTIES-

Staterooms-
(5) 2 Person Staterooms
(5) Frigidaire Air Conditioning Units
(10) Personal DVD Players W/ 10.5" LCD Screens (1 Per Bunk)
 Heads- 2
 Showers- 2
Washer/Dryer- (1) Kenmore Front Load
Water Heaters- (3) Tank Water Heaters
Sinks- (2) W/ Mirrors
TANKAGE
Water- 2,100 Gallons
Fuel- Deck Loaded
Ballast- (8) Tanks
Black Water- 750 Gallons

SAFETY

Liferaft-
(1) Elliot 25-Person "A-Pack"
Liferings- 4
EPIRB- ACR RLB-32, 406 Mhz
Fire Extinguishers- 16
Fixed Extinguisher- N/A
Survival Suits- (18) Adult
(4) Jumbo
Life Preservers- 20
AED- 1
First Aid Kit- 3
Oxygen- 1
Trauma Kit- 1

ELECTRONICS

AIS- Furuno FA-150
VHF- (2) Icom M-604
GPS- Furuno GPA-175
Chartplotter- Nobeltec Odyssey
Loudhailer- Fourjay
Computer- (1) Panasonic
 Toughbook Laptop
(1) Dell Desktop
Cameras- (8) CCTV
Cell Phone- (562) 706-1530
Satellite Phone- N/A